



AVK SUPA MAXI™ FLANGE ADAPTOR, PN 10

633/70

For gas, universal and tensile, NBR sealing

004

AVK's Supa Maxi™ range of universal tensile couplings sets a new standard. The patented SupaGrip™ sealing support system with flexible bracket ensures full support of the gasket and full tensile strength on all pipe types up to PN 10. Supa Maxi™ couplings are very easy to mount with the possibility of $\pm 4^\circ$ angular deflection, the permanent protection caps, the lifting eye and the fact that they are tightened from the sleeve side with no need for re-tightening the bolts.

Product Description:

Supa Maxi™ flange adaptor - universal & tensile - A2 bolts / A4 nuts for gas -20°C to +70°C

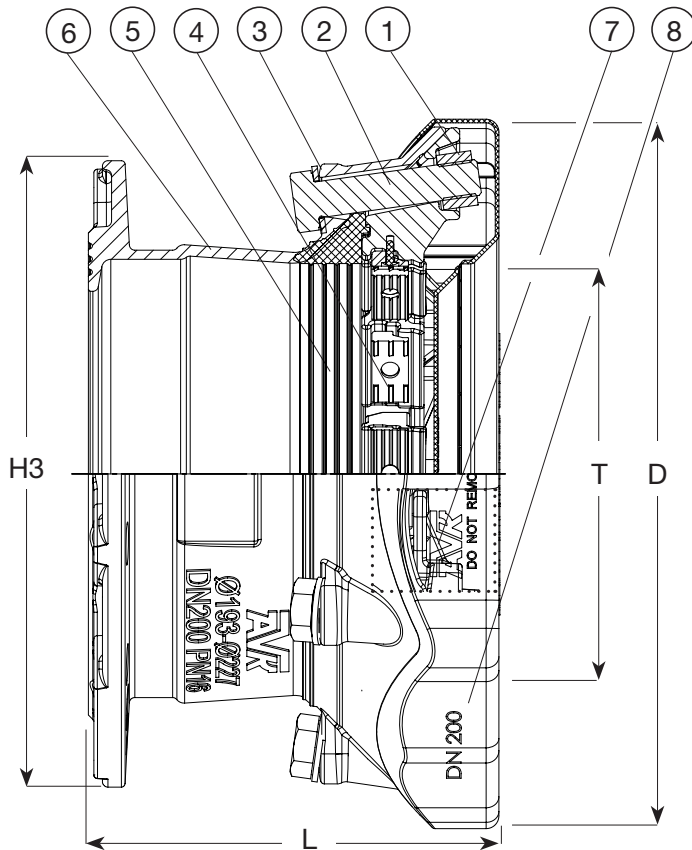
Standards:

- Designed according to EN 14525
- Universal flange drilling to EN1092 (ISO 7005-2), PN 10/16

Features:

- Patented SupaGrip™ sealing support system with flexible bracket ensures full support of the gasket even at minimum pipe size
- Full tensile strength on all pipes is ensured by two different metal grip segments - every other of gunmetal for PE/PVC and of hardened stainless steel for cast iron/ductile iron/steel pipes. For PE pipes a support bush is to be used.
- Metal grip segments are mounted with pins for maximum durability
- $\pm 4^\circ$ angular deflection at max. 1.5 x PN 10
- Large tolerance ranges
- All DN's are for PN 10
- Ductile iron body and bracket of cast steel, epoxy coated according to DIN 30677-2 and GSK approved
- Gasket of NBR rubber approved by Gastec
- Bolts of A2 and nuts of A4 are anti-friction coated to prevent galling
- Permanent protection cap protects the coupling during handling and installation. They are yellow to indicate gas.
- The pipe will not move inwards when tightening
- Bolts are tightened from the sleeve side for full access when space is limited
- Re-tightening of bolts is not necessary
- Lifting eye in DN 100-300
- Design pressure 29 bar according to EN 14525. Working pressure max. 10 bar. Max. test pressure according to pipe standard.





| DN | Supa Maxi end | Multi drilling* |
|---------|------------------|-------------------------------|
| 40/50 | 3 x M14 x 75 mm | 1, 2, 3, 4, 5, 8, 9, 10 |
| 50/65 | 3 x M16 x 75 mm | 1, 2, 3, 4, 5, 8, 9, 10 |
| 80 | 3 x M16 x 75 mm | 1, 2, 3, 4, 5, 8, 9, 10, 11 |
| 100 | 4 x M16 x 75 mm | 1, 2, 3, 4, 5, 6, 7, 8, 9, 11 |
| 100/125 | 4 x M16 x 75 mm | 1, 2, 3, 4, 5, 6, 7, 8, 9, 11 |
| 150 | 4 x M16 x 90 mm | 1, 2, 5, 9, 11 |
| 200 | 6 x M20 x 100 mm | 1, 2, 5, 8, 9, 11 |
| 225/250 | 6 x M20 x 100 mm | 1, 2, 5 |
| 250 | 6 x M20 x 100 mm | 1, 2, 5 |
| 300 | 8 x M20 x 100 mm | 1, 2, 5, 9, 11 |

| Drilling* | |
|---|----------------------|
| 1: ISO 7005-2, EN 1092-2: 1997, DIN 2501 (universal drilling) | 6: BS 10 Table F |
| 2: ANSI B16.1 CL 125 | 7: BS 10 Table H |
| 3: BS 10 Table A | 8: DIN 1882 |
| 4: BS 10 Table D | 9: AS 2129 Table D+E |
| 5: BS 10 Table E | 10: AUG-TAU |
| | 11: AS 4087 Fig. B5 |

Component List:

| | | | |
|------------|-----------------------------------|-------------------|----------------------------------|
| 1. Nut | Acid resistant stainless steel A4 | 2. Bolt | Stainless steel A2 |
| 3. Washer | Stainless steel A2 | 4. Grip segment | Gunmetal RG5 and stainless steel |
| 5. Gasket | NBR rubber approved by Gastec | 6. Sleeve | Ductile iron GJS-450 (GGG-45) |
| 7. Bracket | Cast steel | 8. Protection cap | Recyclable PE |

Components may be substituted with equivalent or higher class materials without prior notification.

Reference Nos. and Dimensions:

| AVK ref. nos | DN mm | Product PN Class | T mm | L mm | D mm | H3 mm | Theoretic. weight kg |
|----------------|----------|---------------------|-----------|---------|---------|----------|----------------------------|
| 633-071-70-002 | 40-50 | PN10 | 48 - 71 | 197 | 200 | 165 | 5.0 |
| 633-091-70-002 | 50-65 | PN10 | 69 - 91 | 197 | 226 | 185 | 6.0 |
| 633-106-70-002 | 80 | PN10 | 82 - 106 | 198 | 235 | 200 | 6.5 |
| 633-133-70-002 | 100 | PN10 | 104 - 133 | 203 | 268 | 229 | 9.0 |
| 633-161-70-002 | 125 | PN10 | 132 - 161 | 198 | 285 | 254 | 11 |
| 633-188-70-002 | 150 | PN10 | 159 - 188 | 220 | 340 | 285 | 12 |
| 633-227-70-002 | 200 | PN10 | 193 - 227 | 243 | 389 | 343 | 19 |
| 633-257-70-002 | 250 | PN10 | 224 - 257 | 245 | 437 | 406 | 25 |
| 633-301-70-002 | 250 | PN10 | 266 - 301 | 254 | 476 | 406 | 28 |
| 633-356-70-002 | 300 | PN10 | 314 - 356 | 282 | 545 | 483 | 38 |